



MINROM

POTENTIAL LIES WITHIN

# Company Profile



# Table of Contents

## ABOUT US

<b>Mineral Resource Management Partner</b>	01
About MINROM	03
Our Footprint	04

## SERVICES

<b>Our Core Offerings</b>	05
Strategy	06
Mineral Exploration	08
Resource Modelling, GIS & Geometallurgical Modelling	10
Mining	12
Hydrology Exploration	14
Geology Training	16

## OUR TEAM

<b>Intellectual Resources</b>	18
From the Director	20
Head of Department	20

## EXPERIENCE

<b>Recent Projects</b>	21
------------------------	----

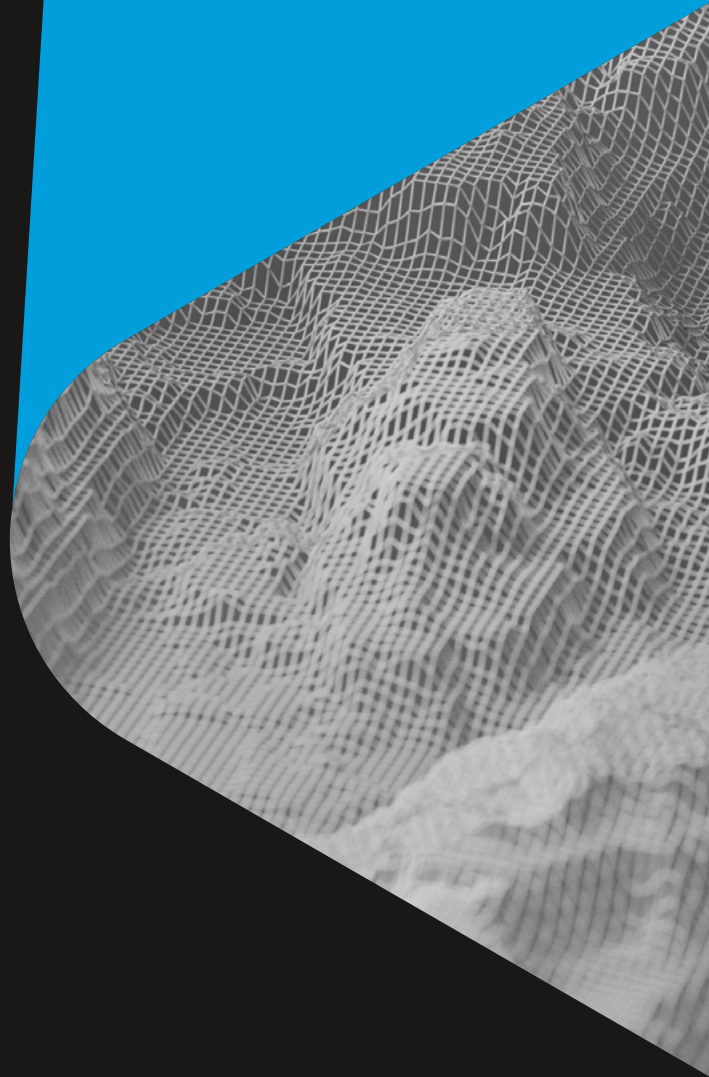
<b>STRATEGIC PARTNERS</b>	30
---------------------------	----

## GET IN TOUCH

<b>Contact Our Team</b>	31
-------------------------	----



POTENTIAL LIES WITHIN



ABOUT US

# Mineral Resource Management Partner





## COMPANY OVERVIEW

**MINROM is a leading geological and mining engineering consulting firm with a footprint throughout Africa. We specialise in identifying and unearthing project potential through scientific investigations in mineral exploration, 3D modelling, geometallurgical modelling and mining engineering.**

Headquartered in South Africa, MINROM is located in Cape Town, with remote offices in Namibia, DRC and Uganda. Our extensive experience in the minerals industry exploration, modelling and mining has led to scores of successful projects across the globe.



# About MINROM

## OUR VALUE PROPOSITION

**MINROM exists to harness the untapped potential of mineral resource assets by uncovering their hidden value and increasing NPV.**

By leveraging our knowledge and understanding of minerals and metals, MINROM empowers mining entrepreneurs and forward-thinking individuals to capitalise on the optimal opportunity to extract these minerals, optimally increasing shareholder value in a sustainable manner. With a commitment to innovation, MINROM employs innovative exploration techniques, 3D geological orebody modelling and geometallurgical modelling technology. Optimal mine planning, pit optimisation with capex engineering delivers increase shareholder value and NPV addition.

## SERVICES

MINROM unlocks mineral asset value through proper mineral resource management

### Strategy



- Project Potential Advisory Services
- Project Ranking Matrices
- Exploration Strategies to Unlock Value
- Project Valuations
- Conceptual Project Evaluations (CPE)
- Preliminary Economic Assessments (PEA)
- Preliminary Feasibility Study (PFS)
- Feasibility Study (FS)
- Bankable/Definitive Feasibility Study (BFS/DFS)
- Independent Project Due Diligence Reviews

### Mineral Exploration



- Due Diligence Investigations
- Geophysics
- Soil Geochemistry
- Exploration Project Scoping
- Exploration Project Management
- Geochemistry
- Drilling Management
- Prospecting Work Programmes

### Resource Modelling & GIS



- Geological Modelling
- Geometallurgical Modelling
- Ore Domain Identification and Testing
- 3D Geological Block Modelling
- Mineral Resource Estimation
- GIS Services & Remote Sensing
- Competent Person's Reports

### Mining



- Stockpile Control
- Mining Rights Applications
- Mining Work Programmes
- Mine Surveys
- TSF (Slime Dam) Design
- Opencast and Underground Mine Design and Optimisation
- Mine Optimisation, Planning and Scheduling
- Mining Equipment Selection Studies
- Reserve Estimation and Reconciliation
- Mining Cost Optimisation Studies

### Hydrology Exploration



- Pump Testing
- Mine Dewatering
- Geophysics
- Borehole Planning
- Potable Drinking Water Supply for Lodges and Mine Camps

### Geology Training



- Field Mapping & Geological Field work
- Drilling Logging & Sampling
- Geological Databases
- Geostatistical Mineral Evaluation
- 3D Geological Block Modelling
- GIS & Remote Sensing



POTENTIAL LIES WITHIN

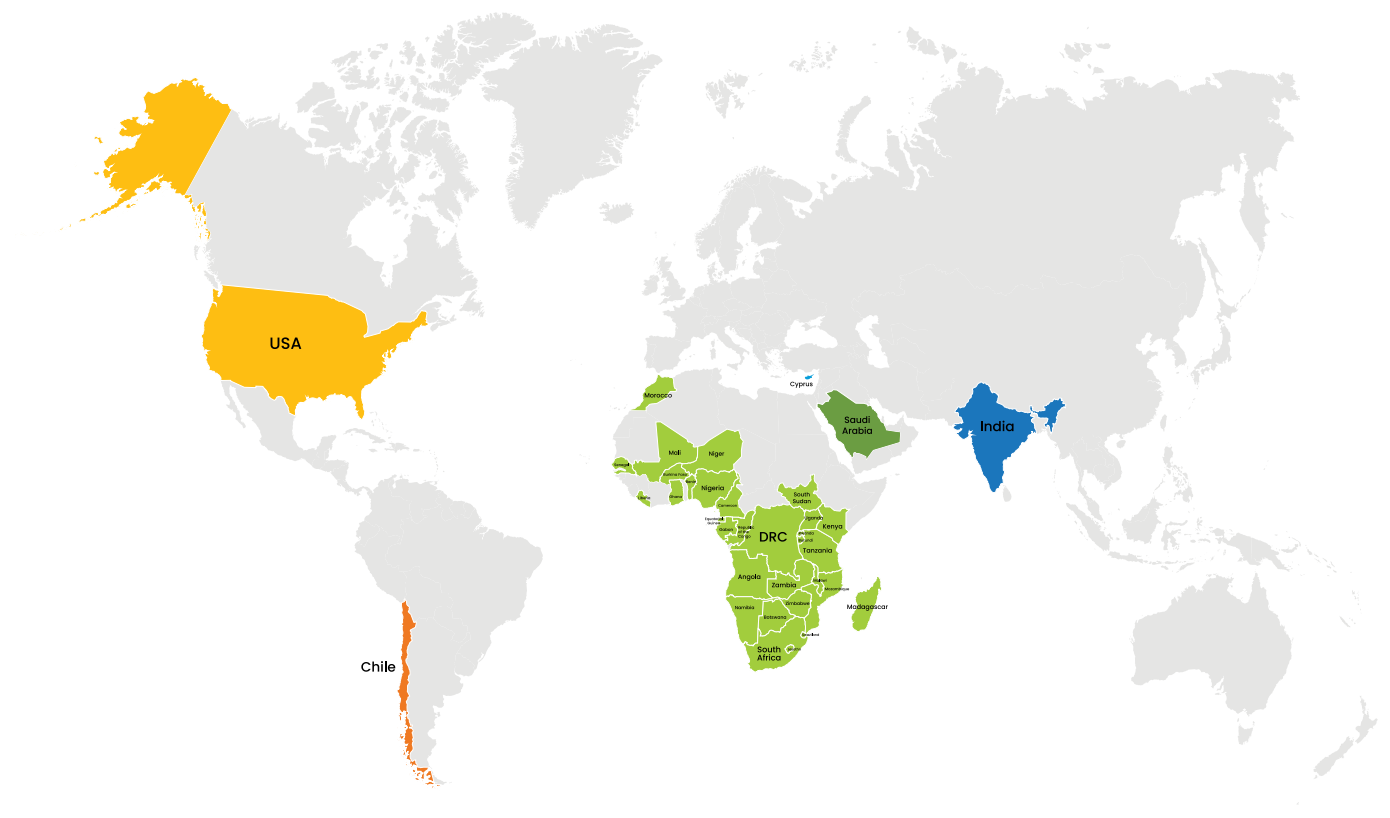
# Our Footprint

**MINROM has an impressive footprint of projects across the world.**

MINROM has worked on multiple commodities, geological deposit types and styles of mineralisation, and has expertise in base metals, industrial minerals, strategic minerals, critical minerals, battery minerals, precious metals and gemstones.



MINROM operates in multiple languages



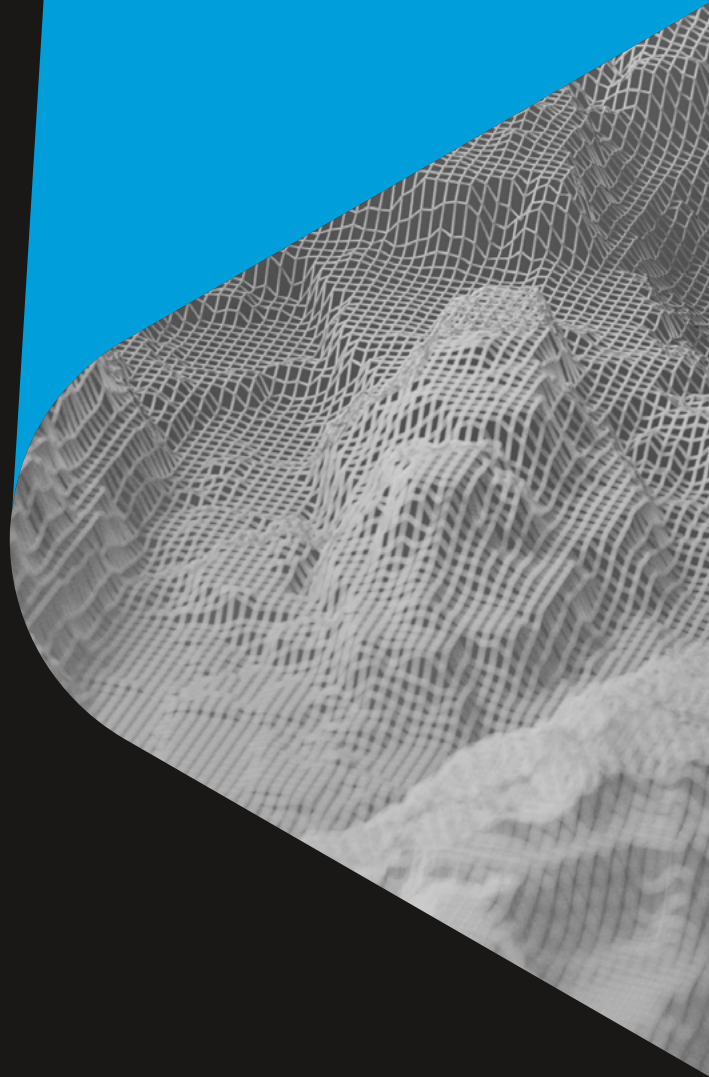
## We have experience in multiple commodities

- Manganese
- Iron
- Copper
- Cobalt
- Gold
- Graphite
- Lithium
- Tin
- Tantalum
- Tungsten
- Diamonds
- Coal
- REEs
- Nickel
- Vanadium
- Chrome
- PGEs
- Silver
- Silica
- Lime
- Lead
- Zinc
- Aluminium
- Vermiculite
- Mica and clay
- Feldspar
- Limonite
- Phosphate





POTENTIAL LIES WITHIN



SERVICES

# Our Core Offerings

## SERVICES

# Strategy



**We are dedicated to delivering innovative, practical, and customised strategic solutions that meet our clients' needs and expectations through the following strategic services.**

Minrom is a leading Africa-based Mineral Resource Management consulting firm with a strategic framework to develop and unlock mineral resources. As experts in the field, we understand the challenges faced by businesses in the exploration and mining sectors, and we are equipped to provide guidance and support to help you make informed decisions.

## What We Do For You



### Project Potential Analysis

We provide advice on the technical and economic potential of mineral projects, based on our extensive experience and knowledge of the industry. We help our clients evaluate the strengths and weaknesses of their projects and identify opportunities to unlock asset value that lies within.



### Project Ranking Matrices

We apply customised project ranking matrices to prioritise project portfolios based on market trends, resource size, operational and capital requirements. We refer to these as our chunky economic models. We use multi-criteria decision analysis techniques to rank projects according to their technical, economic, social, environmental, and geopolitical aspects.



### Prospectivity Reviews

We conduct comprehensive and systematic reviews of the mineral potential of regions, countries, or specific areas, using the latest geoscientific data and methods.



### Exploration Strategies

We design and implement tailor-made exploration strategies aligned with each client's project goals, budget and timeline. We also provide project governance and guidance on exploration planning, execution, management, and reporting.



### Project Valuations

We provide project valuations to help clients determine the fair market value of their mineral projects or transactions. We use internationally accepted valuation standards and methodologies.



### Market and Commodity Reviews

We provide market and commodity reviews for our clients, to help them understand current and emerging trends, as well as the key drivers of the mineral industry. We provide advice on scenarios for future market conditions and opportunities.





### Techno-Economic Due Diligence

We provide techno-economic due diligence services to help our clients evaluate the technical and economic viability of mineral projects or transactions. We conduct thorough and independent reviews of all aspects of the projects or transactions, including geology, resources, reserves, mining methods, processing methods, infrastructure, capital costs, operating costs, revenues, cash flows, sensitivities, risks, opportunities, and valuation.



### Gap Analyses and Risk Assessments

We conduct gap analyses and risk assessments to identify and quantify uncertainties associated with our clients' exploration and projects' development strategies. We provide recommendations on how to mitigate or reduce these risks, enhance the confidence and reliability of their project outcomes and identify the potential of such projects.



### From Preliminary Economic Assessments to Bankable Feasibility Studies

We provide a range of economic studies for our clients' projects, ranging from preliminary economic assessments (PEA) to bankable feasibility studies (BFS). We conduct comprehensive technical and economic analyses of the projects' parameters, assumptions, inputs, outputs, results, and conclusions, and prepare high-quality reports that comply with international reporting codes and standards.



### Strategic Portfolio Assessment

We conduct strategic portfolio assessments to help clients optimise their project portfolio in alignment with their corporate vision and mission. We analyse the performance, value, and potential of their existing projects, as well as opportunities and threats in the external environment. We provide advice on portfolio diversification, rationalisation, expansion, or divestment.



## SERVICES

# Mineral Exploration



**Mineral exploration is a broad term that encompasses all stages of geological exploration for mineral resources. Typically, geological investigations are divided into several sequential stages which involve increasing expenditure and decreasing risk.**

We task ourselves with understanding the complexities of regional and local geology to build sufficient confidence in making accurate predictions about the geology and/or the contained mineralisation.

## What We Do For You



### Exploration Scoping

A proper exploration strategy should dictate all exploration programmes. Developing an exploration strategy and then scoping the different phases of the project can make the difference between project success or failure.



### Geological Desktop Studies

Geological desktop studies are the compilation and analysis of all existing relevant datasets and are generally used to identify target areas for additional exploration. This is an extremely cost-effective risk reduction tool which provides an initial - yet comprehensive - overview of the project's potential.



### Geospatial Analyses & Remote Sensing

Analysing all spatial data allows for patterns and trends to be identified. This aims to identify and refine exploration targets and typically includes spectral image manipulation, satellite imagery interrogation, basin and topographical analysis, regional and structural trend analyses, as well as spatial querying.



### Geological Investigations (Mapping)

Geological mapping is the basis for all geological interpretations and allows for predictions to be made. It includes identifying rock types, contacts, age relations, structural patterns, orientations, mineral assemblages, etc.



### Drilling Management

Exploration and production drilling are used to identify mineralisation. Drilling is the best way to properly understand the subsurface geology. MINROM has extensive experience in planning, managing, and executing drilling programmes, including percussion drilling, reverse circulation (RC), and diamond drilling (core).



### Project Management

Planning, organising, executing, controlling, and monitoring geological projects. Good project management means all the objectives are achieved.





## POTENTIAL LIES WITHIN



### Geochemistry

Chemical principles are applied to deepen the understanding of the geology. Soil sampling and other forms of chemical analyses are used to determine compositional patterns, relationships and correlations. This assists in geological target generation and/or refinement.



### 3D Geological and Geometallurgical Modelling

Geological models and incorporated geometallurgical modelling and characterisation enable us to completely capture the essential characteristics of a deposit including its size, shape, extent, orientation, internal and external deviations, grade properties, and so on. The list of what can be constructed or captured in a 3D geological model is almost endless.



### Competent Person's Reports

This is geological reporting according to international reporting codes such as SAMREC, JORC, NI 43-101. Competent Person's Reports are comprehensive technical documents detailing all geological work performed on a project and are typically used as a requirement for companies listed on the stock exchange.



### Geophysics

Geophysics assists in understanding the subsurface geology. Invasive and non-invasive surveys can be performed. Commonly used techniques are gravity, magnetics, electromagnetic methods (VTEM & SKYTEM), ground penetrating radar (GPR), resistivity, induced polarisation (IP), etc.



### Land Surveying

Spatial survey in which the topography is measured and a DEM and/or DTM of the land surface with contours is produced. Features of note are generally also recorded such as buildings, roads, railway lines, etc.



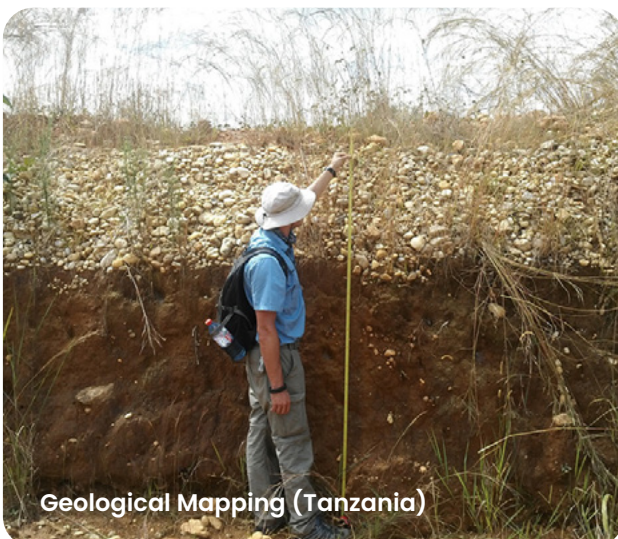
### Due Diligence Investigations

One of the biggest risks to a project is a lack of understanding of the quality of the geological data and any associated geological risks. Mitigate those risks with an independent geological due diligence investigation.



### Prospecting & Mining Rights

Development, preparation, compilation, and submission of prospecting and mining right applications. MINROM can assist with applications for South Africa as well as all SADC countries.



Geological Mapping (Tanzania)



Exploration Drilling (East Africa)

## SERVICES

# Resource Modelling, GIS & Geometallurgical Modelling



**Analysing spatial data allows for patterns, trends, and models to be constructed. Geological models capture the essential characteristics of a deposit including its size, shape, extent, orientation, internal and external structures, grade properties, and geometallurgical characteristics, ultimately unlocking NPV and project value.**

Geological investigations normally culminate in the construction of a 3D geological model designed to make sense of all the topographical and geological data and interpretations derived from the exploration investigations. A proper geological model forms the basis of a reliable mineral resource.

## What We Do For You



### Geospatial Analysis & Remote Sensing

Analysing all spatial data allows for patterns and trends to be identified. This aims at identifying or refining exploration targets and typically includes spectral image manipulation, satellite imagery interrogation, basin and topographical analysis, regional and structural trend analyses, and spatial querying.



### 3D Geological & Metallurgical Models

Geological models capture the essential characteristics of a deposit including its size, shape, extent, orientation, internal and external deviations, grade properties, and geometallurgical components. What makes a good geological model is a proper understanding the geology, structures, and mineralisation.



### Geostatistical Resource Estimations

Geostats integrate complex numerical datasets (e.g. assay and sample data) to determine the expected grade and tonnages of a deposit. Mineral resources can be classified and reported in a CPR according to international codes such as JORC, NI 43-101 and SAMREC.



### GIS Services

- Georeferencing
- Digitisation/Vectorisation
- Creation of Digital Maps/Plans
- Basin & Topographical Analysis
- Regional & Structural Trend Analyses
- Photogrammetry & Orthomosaic Processing
- Drone Data DEM/DTMs Processing
- Remote Sensing





### 3D Modelling Services

- Wireframing
- Explicit models
- Semi-automated explicit models
- Implicit models



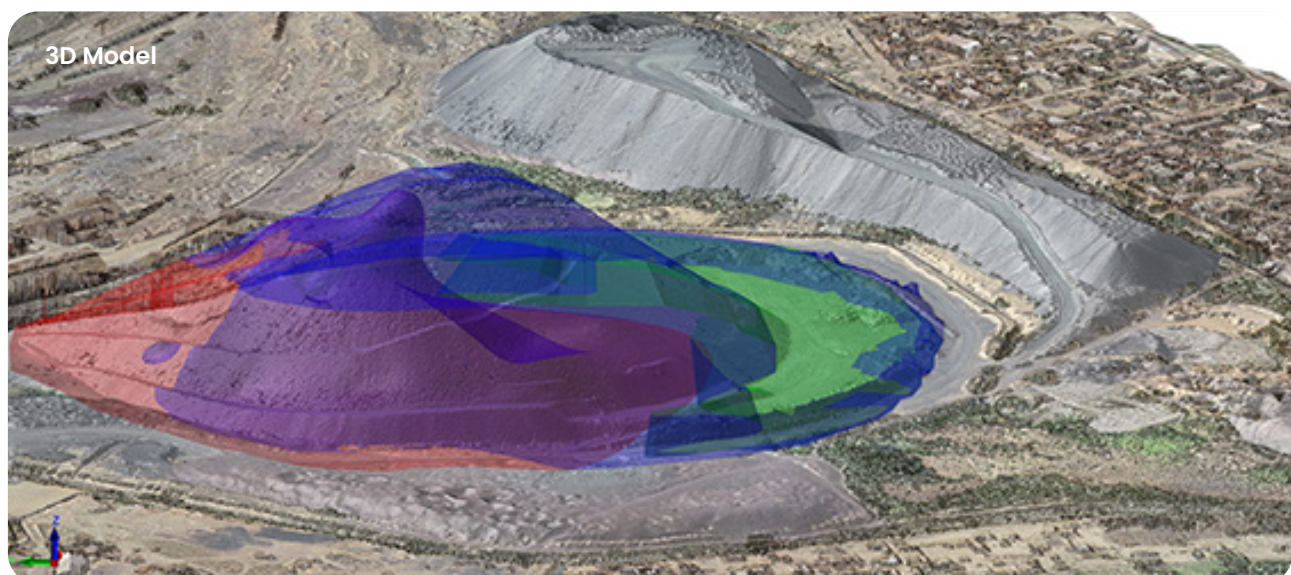
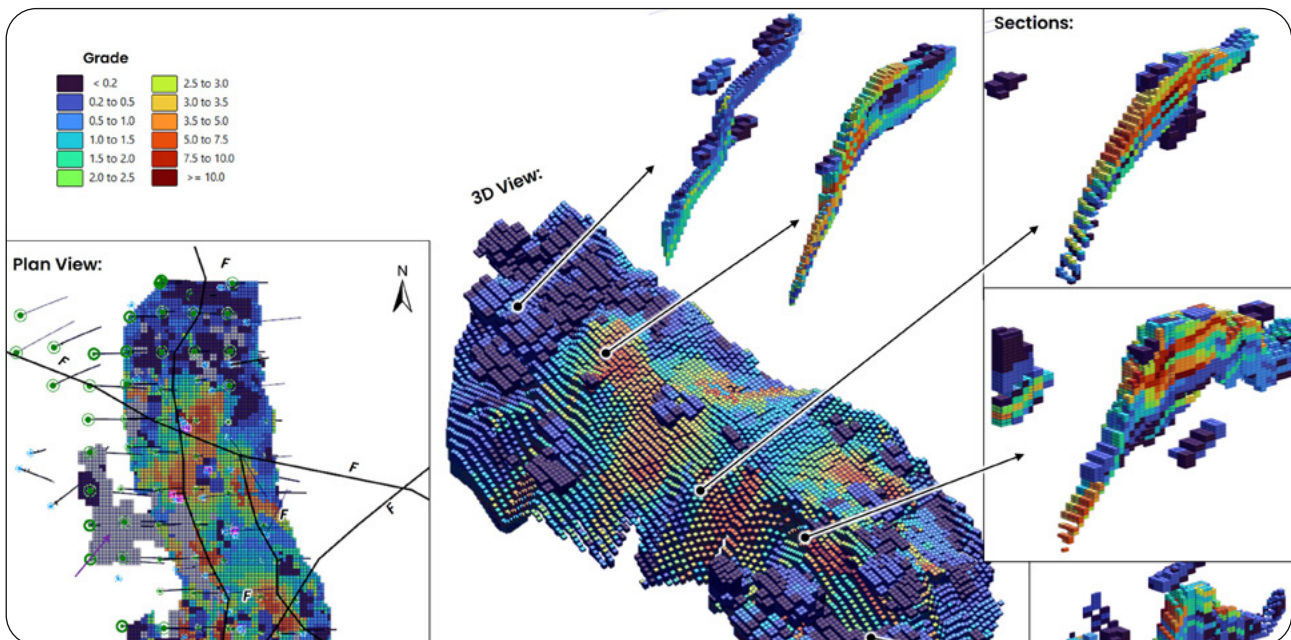
### Resource Services

- Block models
- Grade-tonnage reporting
- Geostatistical analyses
- Resource modelling
- Geometallurgical models
- Mineral resource statements
- Competent Person's Reports



### Mining Services

- Depleting, editing, updating of mining block models
- Resource reconciliations (F1, F2, F3)
- Reserve declaration
- Mine optimisation and design
- Mine planning & scheduling





## SERVICES

# Mining



**Our team of experienced geologists combines technical expertise with a comprehensive understanding of mining operations to deliver customised solutions that optimise resource extraction, ensure geological stability, and maximise profitability.**

The geological development of an identified resource doesn't stop once the initial exploration has been completed. MINROM has experience in all aspects of mine geology, from block modelling and resource estimations to sampling and grade control, and supportive mineral resource management (MRM) functions. MINROM mitigates risks in mining geology and projects through proper planning, development and management of resources. MINROM also performs mine optimisation, planning, and storage facility designs.

## What We Do For You



### Sampling & Grade Control

Misclassification of ore, poor grade information, and errors in estimations can result in millions in lost revenue. The need for representative sampling procedures in open-pit mining is increasingly important. Proper grade control allows for precise mine planning and ensures ore and waste are reported correctly.



### Block Models

3D Geological Block models allow for resource reporting, mine design and pit optimisation, and are the basis for most mining engineering processes.



### Resource Statements

Reporting mineral resources according to SAMREC, JORC, NI 43-101 reporting codes. Fit-for-purpose resource and mineralisation statements and estimations for small-scale miners.



### Stockpile Control

Managing the stockpile and discard dump movement, loading, blending and storage, can be the key to maximising ore sales revenue. Properly managed stockpiles allow for reconciliation and optimisation.



### Mining Works Programme

Development, compilation, and submission of mining works programmes (MWP) in accordance with the requirements of the South African Department of Mineral Resources (DMR).





### Mine Surveys

Mine surveys, drone surveys (photogrammetry and LiDAR), coordinate system conversions, mine reconciliations and stockpile volumetrics.



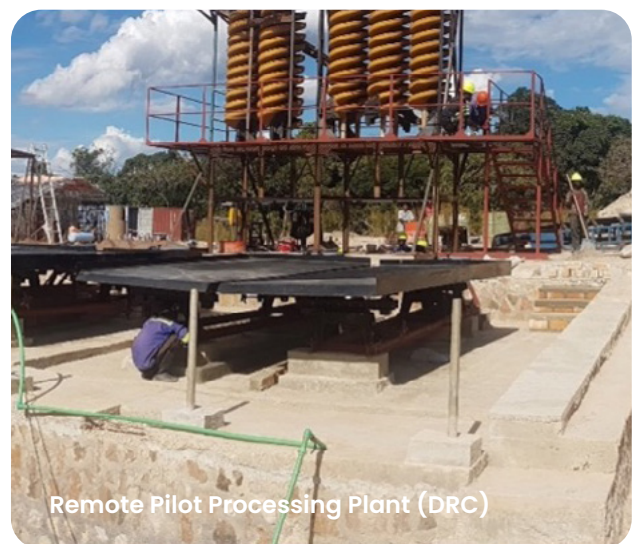
### Prospecting & Mining Rights

Development, preparation, compilation, and submission of prospecting and mining rights applications. MINROM can assist with applications for South Africa as well as all SADC countries.

Zinc, Copper and Cobalt Operation (DRC)



Opencast Copper Mining Operation (DRC)



Remote Pilot Processing Plant (DRC)

## SERVICES

# Hydrology Exploration



**Our hydrogeological division combines advanced modelling techniques, data analysis, and field investigations to assess groundwater resources, develop sustainable water management strategies, and mitigate potential environmental impacts.**

We have a strong focus on the intricate dynamics of groundwater systems and provide specialised solutions to address the unique challenges faced by clients in various industries. We specialise in detection, quantification and management of water resources. Our expertise in hydrogeological and aquifer modelling will ensure the long-term successful management of water resource projects. We combine our vast geological knowledge with our experience in hydrogeological processes and investigations, ensuring we can deliver solutions specific to the client's requirements.

## What We Do For You



### Water Borehole Drilling

Drilling to strike water and intercept underground water sources and aquifers.



### Groundwater Exploration

Determining where to drill for water and site drill holes through aquifer mapping, geophysics and structural geology to find locations with the best chance of striking water.



### Groundwater Management

Testing, monitoring and managing the quality of the water, as well as managing the amount of water that can be sustainably extracted.



### Pump Testing

Determining water yield, quality and pumpability. Testing the sustainability of pumping water and the volume that will be obtained.



### Mine Dewatering

Mine dewatering involves comprehensive studies on the sources, flow dynamics, and spatial extent of water within a mining operation, to determine the optimal methods of managing and dewatering the mine for safe and legal mine management.





## Soil and Agriculture

Our hydrogeological division also deals with all geological aspects relating to soil and agriculture. This includes analysing soils and soil profiles, and performing soil sampling and testing. The following services are offered:



### Soil Geochemistry

Soil sampling and soil chemistry testing for environmental investigations and agriculture.



### Agricultural Drone Surveys

Monitoring the health and growth of your crops using drones to survey the agricultural area.



### NDVI Crop Analysis

Drone survey imagery can be processed to provide colour maps of the crops showing the vegetation's health.







# Geology Training



**Our training department empowers professionals with the knowledge and skills needed to excel in the field of geology. We provide comprehensive and practical education, covering various aspects of geology from fundamental concepts to advanced techniques.**

MINROM offers GIS and geological training courses in the mineral exploration and mining geology disciplines. The courses are aligned with industry standards and best practice guidelines. MINROM offers both set curriculum courses held annually, and tailor-made courses to meet clients', companies', or mines' expressed requirements. The standard geological training programmes are aimed at students, graduate geologists, small-scale mining operators (and their supporting geological teams), and prospectors.

## What We Do For You



### Logging & Sampling

This course covers everything to do with logging and the drilling and sampling of core, RC rock chips and percussion chips. This includes recovery, alteration, lithological, mineralisation and geotech (RQD) logging, as well as sampling protocols and extraction techniques.



### Survey Geologists

Participants learn the basic concepts of surveying, from setting up and using the differential survey instrument (Leica, Trimble, Total station) through to plotting, calculating and modelling survey data.



### Drilling for Geologists

This course teaches the fundamental processes that are involved in drilling (types, methods, techniques, operation, etc). Participants will also learn how to effectively identify how to plan drillholes and manage all aspects of a drilling project.



### Geological Databases: Set-up & Management

This course focuses on collecting, evaluating, standardising, validating, storing and securing geological and spatial data. Your geological data is your asset: learn how to use and protect it.



### Geostatistical Mineral Evaluation

This course covers a range of practical and technical skills in mineral estimation. It covers the basics of geospatial statistics (geostats) and goes into detailed geospatial analyses, data processing, variography and estimations. Statistical skills are not a prerequisite.



### 3D Geological Modelling

This course will train participants in the fundamentals of geological modelling, focusing on techniques, methods, best practice principles and quality of the geological model. Micromine™ is used as the primary software, however, the pros and cons of other software packages are also discussed.





### GIS & Remote Sensing

The course exposes learners to using real-life generated field data to create geological maps, sections, grids and various vector and raster data outputs. Attendees will also learn how to obtain, manipulate and process imagery (satellite and spectral). Open-source software will be used (QGIS).



### Geological Fieldwork

This outdoor course applies book knowledge to practical geological problem solving in the field. Participants will learn how to use geological equipment, collect field data, measure geological features, extract required information from rocks and how all this information can be used and applied.



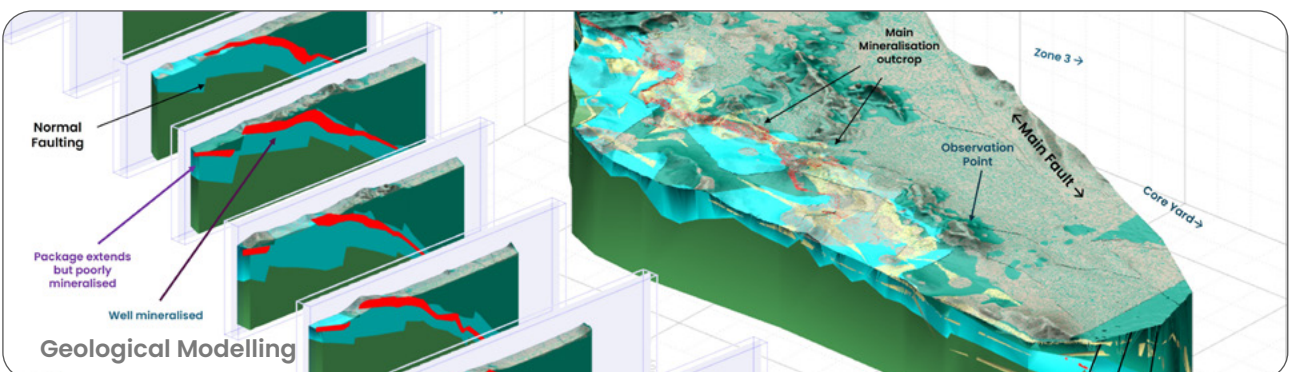
Sampling and Surveying



Sampling and Surveying



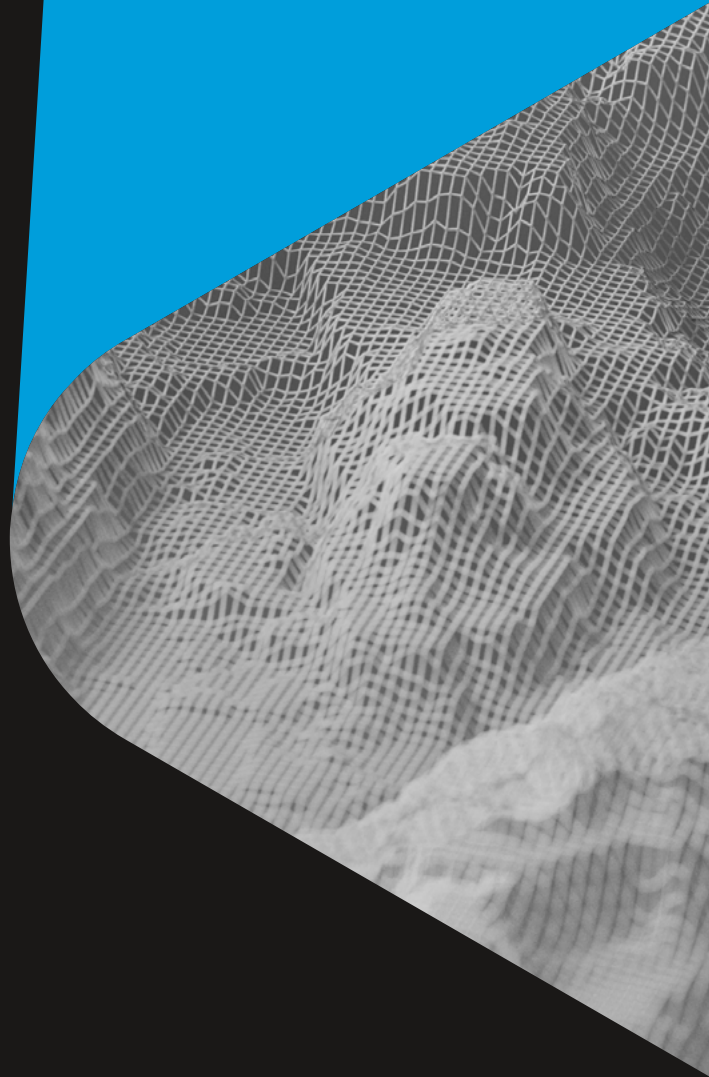
Geological Core Logging



Geological Modelling



POTENTIAL LIES WITHIN



OUR TEAM

# Intellectual Resources





## THE MINROM APPROACH

**In the past decade, we have developed and refined key aspects of what makes our services so competitive, unique and in demand – this is what we like to refer to as the ‘MINROM approach’, which combines our company’s ethics, qualities and philosophy with a tried-and-tested method.**

At MINROM, we pride ourselves on being agile, flexible, self-sufficient and independent. We are committed to having a strong and reliable in-house capacity. We also work closely with geophysical, geostatistical and metallurgical experts in order to maximise our contribution to your project’s value.

MINROM favours the phased approach to exploration programmes to maximise shareholders. Here at MINROM, we adhere to best practices in safety and environmental management. We operate in accordance with the guidelines and procedures of the South African Council for Natural Scientific Professions (SACNASP), and are committed to safe and ethical operations, with open and transparent reporting.



## From the Director



**Oscar van Antwerpen**  
CEO & Mineral Resource Manager

Oscar van Antwerpen is the founder and CEO of MINROM. He is qualified in mineral resource management (MRM) and has more than 32 years of extensive experience. He performed fundamental mineral resource management and continuous improvement functions with Gold Fields South Africa and BHP Billiton. He is also a registered Professional Natural Scientist (Pr.Sci.Nat.) with SACNASP, a member of the Geological Society of South Africa, a trained Six Sigma practitioner, and is registered as a Competent Person to declare manganese, iron and graphite resources.

Oscar is a skilled mineral resources manager, with a wealth of experience gained from his employment in numerous mines in South Africa. He is deeply passionate about training and empowering young individuals. This has led Oscar to develop the training division of MINROM, where he is an integral part of transferring decades of accrued knowledge and experience in the mining industry.

MINROM has a remarkable, energetic and qualified team of specialists in the mineral resources industry.

At MINROM, youthful energy and enthusiasm unite with age and experience. Combining tried-and-tested methods with innovative ideas and technologies enables MINROM to achieve the highest levels of proficiency.

## Head of Geological and Geometallurgical Modelling

**Our company has put together a group of highly qualified geologists who are authorities in the industry.**



**Graham Duncan**  
Head of Mineral Resource  
Modelling & GIS

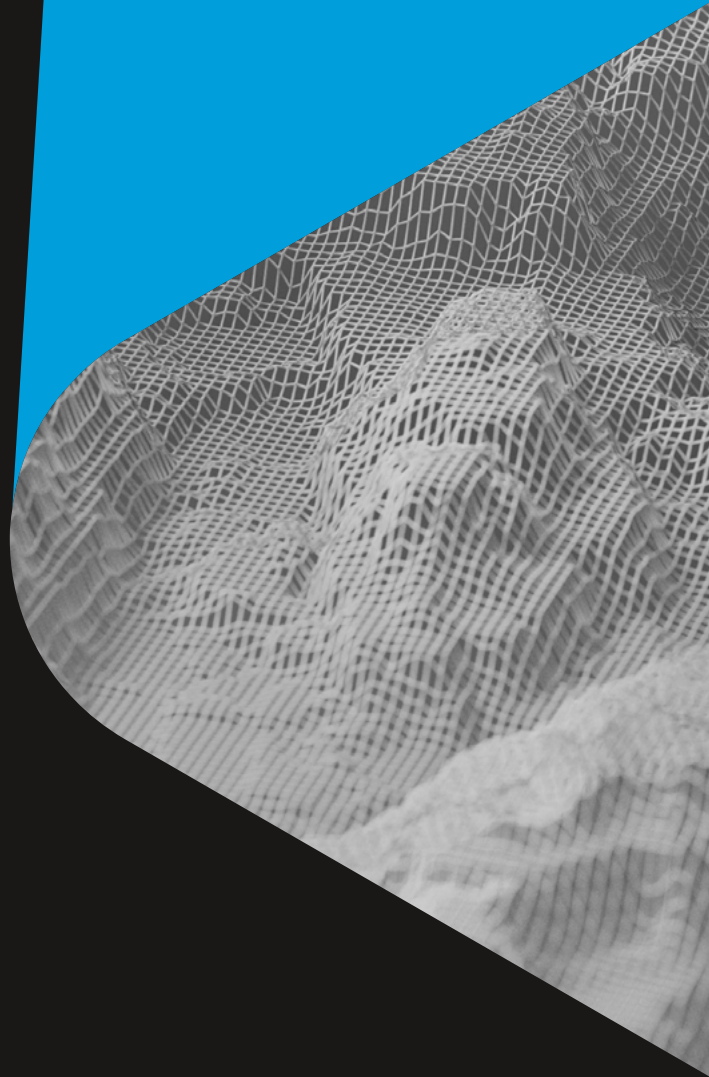
### Graham Duncan

Graham Duncan is the head of Mineral Resources & GIS at MINROM Consulting and is an experienced resource geologist with a demonstrated history of working in the mining & metals industry. With a solid grounding in exploration throughout Africa and the Middle East, Graham is a skilled mineral resource estimator, 3D geological modeller, and Competent Person (JORC). Graham has a BSc Honours (cum laude) in Geology from the University of Johannesburg and has completed numerous courses and postgraduate degrees. He is a registered Professional Natural Scientist (Pr. Sci.Nat.) with SACNASP as well as a member of the GSSA and the SAIMM.





POTENTIAL LIES WITHIN



EXPERIENCE

# Recent Projects



## Recent Projects

Year	Commodity	Country	Region	Project Type
2025	Cu	South Africa	-	Phosphate Positioning Study
2025	Au	Republic of Congo	-	Scoping Study
2025	-	South Africa	-	Desktop Study
2025	-	South Africa	-	Literature Review for Prospecting Rights in Namaqua District
2025	Cr	Uganda	-	Scoping Study, Site Visit & Reporting
2025	Au	South Africa	-	Literature Review, Site Visit and Report
2025	Mn	DRC	-	Scoping & Development of a Drilling Plan
2024	-	RSA	-	Mine Plan & Rehabilitation Plan
2024	REE	Namibia	-	PSF Team Site Meeting
2024	-	South Africa	-	Remote Sensing
2024	-	Angola	-	License Ranking
2024	-	Namibia	-	Surface Mapping
2024	-	Zimbabwe	-	Mineral Resource Comparison Review
2024	-	Zimbabwe	-	Mineral Resource Comparison Review
2024	-	RSA	-	License Ranking
2024	-	South Africa	-	TSF MRE Fatal Flaw Analysis
2024	-	Namibia	-	MR Presentation
2024	-	South Africa	-	High Level Review
2024	-	South Africa	-	Technical Geological Review
2024	-	South Africa	-	Desktop Study
2024	-	South Africa	-	Desktop Study
2024	-	South Africa	-	Mining Permit Renewal
2024	-	South African	-	Literature Review, Site Visit and Exploration Scoping
2024	-	DRC	-	Micromine Training - French
2024	-	Namibia	-	Site Verification and Model Updates
2024	Coal	Swaziland	-	Site Visit
2024	-	South Africa	-	-
2024	-	Namibia	-	Literature Review & Remote Sensing Study
2024	Li, Sn	Namibia	-	Consultation Meeting
2024	-	Eswatini	-	Data Digitisation and Geological Model
2024	-	South Africa	-	Positioning Study
2024	-	South Africa	-	Remote Sensing
2024	-	Namibia	-	Progress Report Update
2024	-	South Africa	-	Desktop Study
2024	-	Namibia	-	Audit Queries
2024	-	Saudi Arabia	-	MRE Scoping Site Visit
2024	-	South Africa	-	Desktop Building Sand Analysis
2024	-	South Africa	-	Project Prospectivity & Positioning Assessment
2024	-	South Africa	-	Project Positioning Study
2024	Aggregate	Saudi Arabia	-	Manage Resource Upgrade, MRE & JORC CPR
2024	-	South Africa	-	Independent Geological Report





## POTENTIAL LIES WITHIN

Year	Commodity	Country	Region	Project Type
2024	Au	Brazzaville	-	Mineral Resource Site Visit & Data Validation
2024	Au	South Africa	-	Council for Geoscience: Drill Hole Data Retrieval
2024	Fe	South Africa	-	PPS
2024	-	Namibia	-	Surface Mapping
2024	Cu	Saudi Arabia	-	Met Model, Domaining, Second Phase Sample Selection
2024	Cr	South Africa	-	Life of Mine Investigation (Phase 2)
2024	Graphite	South Africa	-	Chrome Prospectivity Assessment & Exploration Strategy
2024	Graphite	South Africa	-	Volumetric Estimate
2024	Zn, Cu, Au	South Africa	-	Magnesite Positioning Study
2024	Mg	South Africa	-	Conceptual Resource Model, Exploration Strategy & Governance Parameters
2024	P	Angola	-	Site Visit and Scoping Study
2024	Cr	South Africa	-	Review & Commentary: Haakdoorndrift Drilling Report
2024	-	Saudi	-	Phase 4 Mineral Resource Updates
2024	-	DRC	-	Remote Sensing, Target Generation & Drill Programme Scoping
2024	-	DRC	-	Onsite Exploration Management & Data Collection
2023	Li	South Africa		GIS Study, Literature Review
2023	Li	Namibia	Regional	Geological Report, GIS Study & Literature Review
2023	Diamonds	Namibia	Malanje	GIS Study & Literature Review
2023	Li	Angola	-	GIS Study & Literature Review
2023	Ni	Namibia	-	Geological Report
2023	Li, Ta	DRC	-	Mapping & Site Visit
2023	Fe	Namibia	Erongo	-
2023	Zn, Li	Namibia	Erongo	Site Visit, GIS Study & Literature Review
2023	Au	Namibia	Regional	Site Visit, Data Integrity
2022-2023	Au	Zimbabwe	Regional	Site Visit, Data Integrity
2022-2023	Au	Zimbabwe	Regional	Site Visit, Data Integrity
2022-2023	Li, Sn, Ta, W	Zimbabwe	Regional	GIS Study, Literature Review
2023	Li	DRC	-	GIS Study, Literature Review
2023	Fe	Namibia	Khomas	Geological Report,
2023	Mn	Namibia	Omaheke	Mapping, Site Visit, GIS Study
2023	Li	Namibia	Erongo	Mapping, Site Visit, Geological Report, GIS Study
2023	Diamonds	Angola	-	Geological Report, GIS Study
2023	Water	Oman	Regional	Hydro Study
2023	Multi	DRC	Katanga	Desktop Study & Remote Sensing Analysis
2023	Li	Zimbabwe	Mashonaland Central	Due Diligence
2023	Limestone	South Africa	Limpopo	Exploration & Mineralisation Estimation
2023	Graphite	Uganda	Kitgum	Exploration
2023	Li	Namibia	Erongo	Desktop Study
2023	Li	Namibia	Erongo	Desktop Study
2023	Li	Namibia	Erongo	Site Visit & Scoping Study
2023	Fe	Namibia	Khomas	Geophysical Survey
2023	Multi	Angola	North-East	Desktop Study & Remote Sensing Analysis
2023	Fe	South Africa	Limpopo	Advisory Services
2023	Multi	Namibia	Regional	Desktop Study
2023	Mn	Namibia	Omaheke	Techno-Economic Assessment



## POTENTIAL LIES WITHIN

Year	Commodity	Country	Region	Project Type
2023	Li	Namibia	Erongo	Desktop Study
2023	Cu, Co	DRC	Katanga	Conceptual Study
2023	Fe	South Africa	Limpopo	Exploration
2023	Ni, Cr	DRC	Kasai Central	3D Geological Model and Mineralisation Estimation
2022	Mn	South Africa	Western Cape	Drilling & Mineralisation Estimation
2023	Li	Namibia	Erongo	Site Visit & Scoping Study
2023	Li	Namibia	Erongo	Site Visit & Scoping Study
2023	Mn	Namibia	Omaheke	Site Visit & Scoping Study
2023	Agriculture	South Africa	Western Cape	GIS Services
2023	Li	Namibia	Erongo	Site Visit & Scoping Study
2023	Graphite	Uganda	Kitgum	Advisory Services
2023	Diamonds	Angola	Regional	GIS Services
2023	Water & Wind	Oman	Regional	Hydrological & Wind Study
2022-2023	Fe	Eswatini	Hhohho	Mapping, Drilling & Resource Estimation
2022-2023	Graphite, Li & Ni	Sub-Saharan Africa	Sub-Saharan Africa	Advisory Services
2021-2023	Cu, Co	DRC	Katanga	Drilling & Resource Estimation, Metallurgical Study
2021-2023	Co, Cu, Ge, Ni	DRC	Katanga	MRM Services
2022	PGE's	South Africa	North West, Limpopo & Mpumalanga	Due Diligence & Site Visit
2022	Fe	South Africa	Northern Cape	Geophysics & Drilling
2022	Cu, Co	DRC	Lualaba	Advisory Services
2022	Au	DRC	Kakesa	Site Visit & Scoping Study
2022	Fe	RSA	Northern Cape	Exploration
2022	Sillimanite	South Africa	Northern Cape	Mapping
2022	Aggregate	RSA	Eastern Cape	Licence Application
2022	Graphite	Uganda	Kitgum	Metallurgical Study & Block Model
2022	Au	South Africa	KwaZulu Natal	Licence Application
2022	Au	South Africa	North West	Advisory Services
2022	Diamonds	South Africa	Northern Cape	Exploration
2022	Au, Fe	Angola	Regional	Site Visit & Scoping Study
2022	Aggregate	South Africa	Western Cape	Due Diligence
2022	Aggregate	South Africa	Eastern Cape	Site Visit & Optimization Study
2022	Training	Senegal	-	Geological Modelling & Estimation Training
2022	Limestone	South Africa	North West	Exploration & Mineralisation Estimation
2022	Training	DRC	-	Geological Modelling & Estimation Training
2022	Fluorspar	South Africa	Gauteng	Geometallurgical Model
2022	Heavy Mineral Sands	South Africa	Eastern Cape	Due Diligence
2022	Li	Zimbabwe	Matabeleland South & Mashonaland East	Due Diligence & Site Visit
2022	Graphite	Tanzania	South-East	Due Diligence
2022	Graphite	Tanzania	South-East	Due Diligence
2022	PGE's & Cr	Zimbabwe	Midlands	Due Diligence
2022	Au	Zimbabwe	Midlands	Site Visit & Advisory Services
2022	Graphite	Tanzania	South-East	Due Diligence
2022	Training	South Africa	-	Geology Training
2022	Au	Zimbabwe	Midlands	3D Geological Model & Mineralisation Estimation
2022	Sand	South Africa	Western Cape	Licence Application



## POTENTIAL LIES WITHIN

Year	Commodity	Country	Region	Project Type
2022	Au	Zimbabwe	Midlands	Techno-Economic Due Diligence
2022	PGE's, Cr	South Africa	Limpopo	Desktop Study
2022	Mn	South Africa	Northern Cape	Geological Model & Resource Estimation
2022	Au	Mozambique	Changara	Desktop Study & Site Visit
2022	Mn	South Africa	Western Cape	Desktop Study & Site Visit
2022	Limestone	South Africa	Western Cape	Desktop Study
2022	Cu, Co	DRC	Katanga	Due Diligence & Site Visit
2022	Fe	India	Karnataka	Resource Review
2022	Mn, Fe	Namibia	Otjozondjupa	Drilling & Resource Estimation
2021-2022	Au	Equatorial Guinea	Centro Sur/Wele-Nzas	Regional Exploration, MRM On-Site Services
2021-2022	Mn & Fe	South Africa	Northern Cape	Drilling & Resource Estimation
2021	Fe	Namibia	Dordabis	On-site geological services
2021	Mn	South Africa	Northern Cape	Due Diligence
2021	Mn, Fe	South Africa	Northern Cape	Drilling
2021	Mn, Fe	South Africa	Northern Cape	Mapping, Sampling and Range Analysis
2021	Mn	South Africa	Northern Cape	Exploration
2021	Feldspar	South Africa	Limpopo	Resource Depletion
2021	Mn, Fe	Namibia	Otjozondjupa	Drilling & Resource Estimation
2021	Fe, Mn	South Africa	Northern Cape	Desktop Study
2021	Sn, Ta, Nb	DRC	North Kivu	Exploration
2021	Cu, Co	DRC	Haut Katanga	Due Diligence & JORC CPR
2021	Fe	South Africa	Northern Cape	Exploration
2021	Diamonds, Au, Ni	DRC	Kasai Central	Exploration
2021	Fe	Namibia	Khomas	Resource Update
2021	Graphite	Uganda	Kitgum	CPR
2021	Si	Saudi Arabia	Riyadh	Pre-Feasibility Study
2020	Fe	Namibia	Khomas	Feasibility Study
2020	Fe	South Africa	Northern Cape	Due Diligence
2020	REE, Verm.	South Africa	Limpopo	Drilling & Mineralisation Estimation
2020	REE, Verm.	South Africa	Limpopo	Due Diligence & Site Visit
2020	Fe	Namibia	Khomas	Drilling & Resource Estimation
2020	Cu	South Africa	Northern Cape	Due Diligence
2020	Fe	South Africa	Northern Cape	Geological Reconnaissance
2020	Fe	South Africa	Northern Cape	Due Diligence
2020	Mn	South Africa	Northern Cape	3D Geological Model & Resource Estimation
2020	Ge, Ga, Ag	DRC	Katanga	3D Geological Model & Resource Estimation
2020	Cu, Co	DRC	Katanga	Drilling & Resource Estimation
2020	Si	Saudi Arabia	Riyadh	Exploration, CPR
2020	Fe	Namibia	Dordabis	Exploration, CPR, JORC, BFS
2019-2020	Fe, Mn	South Africa	Northern Cape	On-site MRM Services, CPR, JORC
2019	Fe	South Africa	Limpopo	Drilling & Resource Estimation
2019	Au	Ghana	Bole	Desktop Study
2019	Fe, Mn	South Africa	Northern Cape	MRM On-site Services
2019	Graphite	Uganda	Kitgum	CPR
2019	Cu, Co	Zambia	Ndola	Report





## POTENTIAL LIES WITHIN

Year	Commodity	Country	Region	Project Type
2019	Au	Ghana	-	DD, Review, Report
2019	Fe, Mn	South Africa	Northern Cape	Exploration, CPR
2019	Cr	South Africa	North West	MWP
2019	Mn, Fe	South Africa	Northern Cape	Exploration
2019	Fe	South Africa	Northern Cape	Exploration
2019	Coal	South Africa	KZN	Exploration, CPR
2019	Lime	South Africa	North West	CPR
2019	Cu, Co	DRC	Katanga	Exploration, CPR
2019	Cu, Co	DRC	Katanga	Exploration
2019	Lime, Fe	South Africa	Limpopo	Exploration
2019	Sn	Zambia	Southern Province	Exploration
2019	Cr, PGE	South Africa	Limpopo	Review
2019	Fe	South Africa	Limpopo	Exploration, CPR, JORC, Mining Work Programme
2019	Al	South Africa	Limpopo	DD, JORC
2019	Au	DRC	Tanganyika	DD, CPR
2019	Cu, Co	DRC	Kamina	DD, CPR
2019	Graphite	Uganda	Kitgum	Exploration, CPR, JORC, ASX, LSE
2019	Feldspar	South Africa	Limpopo	Review
2019	Diamonds	South Africa	North West	Exploration
2019	Water	South Africa	Western Cape	Report
2019	Si	Saudi Arabia	Riyadh	Mapping, Report, Range analysis
2019	Mn, Fe	South Africa	Northern Cape	Exploration, Report
2019	Cu	Namibia	Erongo	DD
2019	Cr	South Africa	North West	Report
2019	Water	South Africa	Western Cape	Report
2019	Cu	DRC	Kasai	DD
2019	Cr	South Africa	Limpopo	Report
2019	V	South Africa	Limpopo	Exploration, CPR
2018-2019	Graphite, Au	Mozambique	Cabo de Delgado	Mapping, Geophysics, Soil Sampling, CPR
2018-2019	Cu	South Africa	Northern Cape	Mapping, CPR, NI43-101
2018-2019	Cu	South Africa	Northern Cape	CPR
2018-2019	Cu	South Africa	Northern Cape	CPR
2018-2019	Cu	South Africa	Northern Cape	CPR
2018-2019	Cu	South Africa	Northern Cape	CPR
2018-2019	Li, Sn, Ta, W	Namibia	Erongo	CPR, JORC - ASV, NSX
2018-2019	Cu	South Africa	Northern Cape	CPR
2018-2019	Coal	South Africa	North West	Study
2018-2019	Cu	South Africa	Northern Cape	CPR
2018-2019	Cu	South Africa	Northern Cape	CPR, JORC
2018-2019	Cu	South Africa	Northern Cape	CPR
2018-2019	Cu	South Africa	Northern Cape	CPR
2018-2019	Cu	South Africa	Northern Cape	CPR
2017-2019	Fe	Namibia	Erongo	Exploration, CPR, JORC
2017-2019	Sn, Ta, W	DRC	Mitwaba	Mapping, CPR
2018	Co, Au	Uganda	Eastern Uganda	Exploration, CPR



## POTENTIAL LIES WITHIN

Year	Commodity	Country	Region	Project Type
2018	Cu, Ag, Au	South Africa	Northern Cape	DD
2018	Sn	DRC	South Kivu	MRM System Review
2018	Au	South Africa	Magaliesberg	DD
2018	Cu, Co	DRC	Kolwezi	DD, CPR, JORC
2018	Cu, Co	DRC	Katanga	Report
2018	Sn	Namibia	Kunene	DD, CPR, JORC
2018	Sn	Namibia	Khorixas	MWP
2018	Cu, Co	DRC	Katanga	DD, CPR, JORC
2018	Cu, Co	DRC	Katanga	DD, CPR, JORC
2018	Cu, Co	DRC	Katanga	Exploration, CPR
2018	Cu, Co	DRC	Katanga	DD, CPR, JORC
2018	Cu, Co	DRC	Katanga	DD
2018	Cu, Co	DRC	Katanga	DD, CPR, JORC
2018	Cu, Co	DRC	Katanga	Exploration
2018	Cu, Co	DRC	Katanga	Exploration, CPR, JORC
2018	Cu, Co	DRC	Katanga	DD, CPR, JORC
2018	REE	Malawi	-	Review
2018	P	Chile	Antofagasta	DD, NI43-101
2018	Co, Cu	DRC	Katanga	DD, Exploration, JORC, ASX
2018	Cu, Co	Zambia	Central Project	Exploration, CPR
2018	Cu, Co	DRC	Kamina	DD
2018	REE	Namibia	-	Review
2018	Cu, Co	DRC	Katanga	DD, CPR, JORC, ASX
2018	Li	South Africa	Northern Cape	DD
2018	Water	South Africa	Western Cape	Hydrogeological Drilling
2018	Cu, Co	DRC	Katanga	DD
2018	REE	South Africa	-	Review
2018	REE	Tanzania	-	Review
2018	Ta, Sn	Namibia	Erongo	Exploration, DD, CPR
2018	Gemstones	South Africa	Ekurhuleni	review
2018	Sn, Ta, W, Co, Au	Uganda	-	DD, CPR, JORC, ASX
2018	Water	South Africa	Free State	Geohydrological Investigation
2018	Cr	Zimbabwe	Mhondorongezi	DD, CPR
2018	Water	Tanzania	Lindi District	Geohydrological Investigation
2018	Cu, Au	DRC	South Kivu	DD
2018	REE	Zimbabwe	-	Review
2017-2018	Fe, Mn	South Africa	Northern Cape	CPR
2016-2018	Cu, Co	DRC	Katanga	Exploration, CPR, JORC
2017	REE	South Africa	Northern Cape	Review
2017	Cr	South Africa	North West	Review
2017	Cr	South Africa	North West	Exploration
2017	Cu, Co	DRC	Katanga	DD, CPR, JORC, ASX
2017	REE	Namibia	Erongo	DD
2017	REE	South Africa	Northern Cape	PWP



## POTENTIAL LIES WITHIN

Year	Commodity	Country	Region	Project Type
2017	REE	South Africa	North West	PWP
2017	Cu, Co	DRC	Katanga	DD, CPR
2017	Cu-Co	DRC	Haut-Katanga	DD, CPR, JORC, ASX
2017	REE	South Africa	Northern Cape	PWP
2017	Cu, Co	Uganda	Eastern Uganda	DD
2017	REE	South Africa	North West	PWP
2017	Cu, Co	DRC	Katanga	DD, CPR
2017	Co	DRC	Haut-Katanga	DD, CPR, JORC, ASX
2017	Cu, Co	DRC	Katanga	DD, CPR, JORC, ASX
2017	REE	South Africa	Northern Cape	PWP
2017	REE	South Africa	Northern Cape	PWP
2017	REE	South Africa	Northern Cape	PWP
2017	REE	South Africa	Northern Cape	PWP
2016-2017	Sn, Ta, W, Nb	DRC	Mitwaba	CPR
2014-2017	Graphite	South Africa	Limpopo	Exploration, CPR
2016	Au	Uganda	Namayingo	DD, CPR
2016	Li, Sn, Ta, W	Zimbabwe	Masvingo	DD, CPR
2016	Diamonds	Namibia	Hardap	DD
2016	Sn, Ta, W, Li	Namibia	Erongo	Exploration, CPR
2016	Li	Uganda	Mitoma	DD
2016	Au	Senegal	Kédougou	DD
2016	Au, Pd, Pt	Cyprus	Troulli area	DD
2016	Ta, Sn, Li	DRC	Tanganika District	DD
2016	Au	Zambia	Ndola	DD
2016	Au, Gemstones	Mozambique	Gilé Region	Exploration, CPR, JORC
2016	Li, Ta	Uganda	Mitoma	DD
2016	Mn	Namibia	Erongo	Exploration, CPR, JORC
2016	Cu, Co	DRC	Katanga	DD, CPR, JORC
2016	Li, Ta, Sn, REE	Uganda	Mitoma	DD
2015	Au, Cu	Namibia	Erongo	Exploration, CPR, JORC
2015	Ag, Au, U	Namibia	Erongo	DD
2015	Mn	Kenya	Vijiweni	DD
2015	Fe, Mn	South Africa	Northern Cape	Exploration, CPR, MRM services
2015	Li, Ta	Zimbabwe	Mashonaland	DD, CPR
2015	Diamonds	Botswana	Orapa	Exploration, JORC, CPR
2015	Li, Ta	Zimbabwe	Mashonaland	DD
2015	Fe, Mn	South Africa	Northern Cape	Exploration, CPR, JORC
2015	Cu, Au	Zambia	North-Western Province	Exploration, CPR, JORC
2015	Fe, Mn	South Africa	Northern Cape	DD, CPR, JORC, MRM services
2015	Fe, Mn	South Africa	Northern Cape	DD, CPR, JORC, On-site MRM Services, Mine Development





## POTENTIAL LIES WITHIN

Year	Commodity	Country	Region	Project Type
2015	Li, Ta	Zimbabwe	Mashonaland	Exploration, CPR, JORC
2015	Au, Ag, Cu	Namibia	Erongo	Exploration, CPR, JORC
2015	Diamonds	Mozambique	Chicualacuala	Exploration
2015	Diamonds	Mozambique	Gaza	DD
2015	Ti, Fe, V	Zambia	Petauke	Exploration
2015	Gemstones	South Africa	Northern Cape	DD
2015	Au	Zambia	Ndola	DD, CPR
2014	Sn, Graphite, F	Namibia	Bathanien	DD
2014	Fe	USA	Navada, LV	CPR
2014	Li, Ta, Sn, REE	Namibia	Erongo	Exploration, CPR, JORC
2014	Mn	Zambia	Milenge	DD
2014	Graphite	Namibia	Erongo	Exploration, CPR, JORC
2014	Graphite	Tanzania	Tanganika	Exploration, CPR, JORC
2014	Cu, Ag, Zn	Namibia	Omaheke Region	DD
2014	Cu	Namibia	Hardap	DD, CPR
2013-2014	Mn	South Africa	Northern Cape	Report
2013-2014	Mn	South Africa	Northern Cape	Report
2013	Mn & Fe	South Africa	-	DD
2013	Mn & Fe	South Africa	-	Exploration, Report
2013	P	South Africa	Western Cape	Review
2013	Mn & Fe	South Africa	-	Exploration, Report
2013	Mn & Fe	South Africa	Northern Cape	DD
2013	Mn	South Africa	Northern Cape	DD
2013	Mn	South Africa	Northern Cape	Exploration, DD
2013	Mn & Fe	South Africa	Northern Cape	DD
2013	Mn	South Africa	Northern Cape	DD
2013	Mn	South Africa	Northern Cape	Exploration, CPR, JORC, ASX
2013	Mn & Cu	South Africa	North West	Exploration, CPR
2013	Mn	South Africa	Northern Cape	DD, Exploration
2013	Mn	South Africa	Northern Cape	DD, Exploration
2013	Mn	South Africa	Northern Cape	Exploration, DD, CPR
2013	Fe	South Africa	Limpopo	Exploration, CPR
2013	Mn	South Africa	Northern Cape	MRM
2013	Mn & Fe	South Africa	Northern Cape	Exploration, CPR
2013	Mn & Fe	South Africa	Northern Cape	DD
2013	Mn	South Africa	Northern Cape	DD
2013	Mn	Namibia	Erongo	Exploration, CPR, JORC, ASX
2013	Cu Sn	South Africa	Northern Cape	DD
2013	Li	Namibia	Hardap	DD
2013	Mn	South Africa	Western Cape	Exploration, CPR, JORC
2013	Mn	South Africa	Northern Cape	MRM
2012	Ta	South Africa	-	DD
2012	Fe, V	Mozambique	Tete	DD, CPR
2012	Base Metals	Mozambique	-	DD



## POTENTIAL LIES WITHIN

Year	Commodity	Country	Region	Project Type
2012	Mn	Zambia	Mansa	DD
2012	Mn	Zambia	Mansa	DD, CPR
2012	Coal	Mozambique	Tete	DD
2012	Sn	South Africa	Limpopo	Exploration, CPR, JORC, LSE Listing for Bushveld Minerals
2012	Ni	Mozambique	Cabo de delgado	DD
2012	Cu	South Africa	Northern Cape	DD
2012	Au	Namibia	Hardap	Exploration
2012	Mn	Burkina Faso	Kossi	DD, CPR
2012	Coal	Mozambique	Tete	DD
2012	Base Metals	Mozambique	Tete	DD
2011	Fe	Mozambique	Tete	DD
2011	Fe	Benin	Borgou	DD, CPR
2011	Cu, Ta, Sn	DRC	-	DD, CPR
2011	Au & Sn	Nigeria	-	DD, CPR
2011	Ta	Nigeria	-	DD, CPR
2011	Coal	Nigeria	-	DD, CPR
2011	Multiple	Tanzania	-	DD, CPR
2011	REE	Zimbabwe	-	DD, CPR
2011	Coal	Zimbabwe	-	DD, CPR
2011	Fe, REE	Namibia	Erongo	Exploration, CPR, JORC
2011	Cr	Zimbabwe	Central	Review
2011	Cu	South Africa	Limpopo	Review
2011	Fe	Nigeria	Kogi	Review
2011	Ti	Cameroon	Northern	Review
2011	Ta, Sn	Cameroon	Northern	Review
2011	Au	Zimbabwe	Eastern	Review
2010	Fe	Nigeria	Central	Review



POTENTIAL LIES WITHIN

## Affiliates







MINROM

POTENTIAL LIES WITHIN

GET IN TOUCH

# Contact Our Team



## Head Office

Unit 3 Kingfisher Park,  
Old Paardevlei Road,  
Cape Town 7130, South Africa



## Contact Us

+27 (0) 82 940 1583  
info@minrom.co.za  
www.minrom.com

MINROM  
Head Office



www.minrom.com